



Without the experienced and competent staff from the Nez Perce, Warm Springs, Yakama, and Umatilla tribes, salmon populations and their habitat within the Columbia River basin would be even more reduced. The Pacific Coastal Salmon Recovery Fund is one funding source that allows projects to be implemented efficiently and timely. The Columbia River provides water, salmon and electricity and has historically been an important source of Northwest culture. The river is everyone's heritage.

For further information, please contact:  
**Columbia River Inter-Tribal Fish Commission**  
 729 NE Oregon, Suite 200 • Portland, Oregon 97232

**PCSRF Team:**  
 Jaime Pinkham, *Watershed Program Manager*; Laura Gephart, *Watershed Programs Coordinator*;  
 Anita Nez, *Watershed Grants Management Specialist*  
 503.238.0667 or [gepl@critfc.org](mailto:gepl@critfc.org)

# Columbia River Inter-Tribal Fish Commission Successes

## under the Pacific Coastal Salmon Recovery Fund

FY 2000 - FY 2005



**Columbia River Inter-Tribal Fish Commission**



**The Columbia River Treaty Tribes:**

*Confederated Tribes and Bands of the Yakama Nation*

*Confederated Tribes of the Warm Springs Reservation of Oregon*

*Confederated Tribes of the Umatilla Indian Reservation*

*Nez Perce Tribe*

In 1977, the four Columbia River treaty tribes (Nez Perce Tribe, the Confederated Tribes of the Umatilla Indian Reservation, the Confederated Tribes of the Warm Springs Reservation of Oregon, and the Confederated Tribes and Bands of the Yakama Nation) formed the Columbia River Inter-Tribal Fish Commission (CRITFC) to provide fisheries coordination, technical assistance and protection of treaty fishing rights. The tribes, individually and acting through CRITFC, work to restore healthy, sustainable salmon populations and other fishes throughout the Columbia River Basin.

Columbia River salmon stocks are extremely important for cultural tribal ceremonies, subsistence and commercial fisheries. Historical estimates of average annual salmon runs exceeded 10-16 million fish in the Columbia River basin. Due to overfishing in the lower river and the ocean, the loss of critical habitat, and the construction of the hydroelectric dams, salmon runs returning to the Columbia River have declined by over 90 percent.



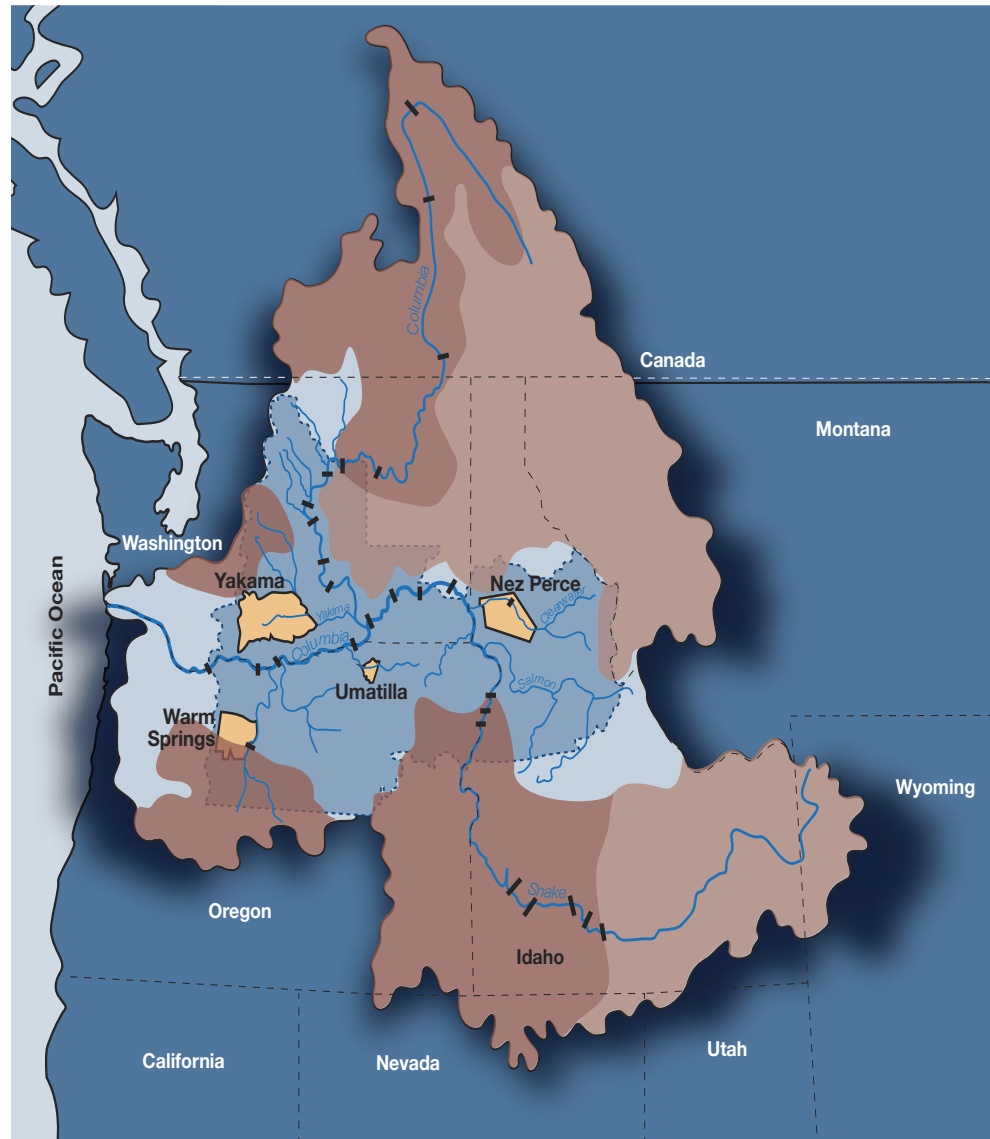
Floyd Calica of the Warm Springs Tribe holds a wild returning adult Spring Chinook salmon to Shitike Creek in Oregon.

The fish and wildlife scientific staff of the Nez Perce, Umatilla, Warm Springs and Yakama tribes, along with CRITFC staff, developed a salmon restoration plan called *Wy-Kan-Ush-Mi Wa-Kish-Wit* (Spirit of the Salmon) in 1995. Blending up-to-date science with the traditional wisdom and history of the tribes, *Wy-Kan-Ush-Mi Wa-Kish-Wit* is designed to restore fisheries in the Columbia River Basin so that the tribes can meaningfully exercise their treaty rights reserved under the treaties with the United States in 1855.

The tribes' participation in the Pacific Coastal Salmon Recovery Fund (PCSRF) is directed by the principals of *Wy-Kan-Ush-Mi Wa-Kish-Wit* to provide fisheries benefits now and in the future. On the web, *Wy-Kan-Ush-Mi Wa-Kish-Wit* can be viewed at [www.critfc.org](http://www.critfc.org).



# Columbia River Basin



Columbia Basin area accessible to salmon outside tribal ceded lands
  Present reservation boundaries

Columbia Basin area accessible to salmon within tribal ceded lands
  Dam

Salmon habitat blocked by dams
  Area never accessible by salmon

© Columbia River Inter-Tribal Fish Commission 2006

**The Columbia Basin reaches into six states and one Canadian province. The four Columbia River treaty tribes' ceded lands cover over one-third of this area.**



Confederated Tribes of the Umatilla Indian Reservation



## Habitat Acquisition in the Iskuulpa and Buckaroo Watersheds

**Benefits to Salmon/Target Salmon Species Affected :** The acquisition of habitat in the Iskuulpa and Buckaroo Watersheds on the Umatilla Indian Reservation will protect up to 2,726 acres to provide spawning habitat for the threatened middle-Columbia River steelhead. The Iskuulpa watershed provides the highest summer steelhead spawning density observed in the 13 streams in the Umatilla Basin. Acquisitions in the Buckaroo Creek watershed will protect up to 3.85 miles of first- and second-order streams. One hundred and fifty-one whole conifer trees have also been air-lifted and placed in the floodplains of the two streams to provide a more complex spawning habitat.

### Habitat Restoration



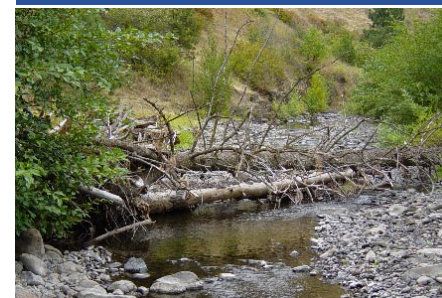
*The Iskuulpa Watershed acquisition protects up to 2,726 acres of spawning habitat for threatened steelhead.*

### Instream Habitat

*Large woody debris adds to the habitat complexity of Buckaroo Creek.*



### Protection



*The Buckaroo Watershed Acquisition protects over one mile of steelhead habitat.*

	Amount	Project
FY 2000	\$216,846	Fish Transportation Vehicle
	\$198,354	Iskuulpa Creek and Minthorn Springs Acquisition I
	\$11,300	Mission Creek Fish Passage Improvement
	\$8,500	Whiskey Creek Fish Passage Improvement
	\$2,500	Natural Resources Public Education & Outreach I-Salmon Walk
	<b>\$437,500</b>	<b>Total</b>
FY 2001	\$343,925	Habitat Acquisition in Iskuulpa and Buckaroo Creek Watersheds II
	\$55,000	Assistance to Native Plant Nursery for Fish Habitat Enhancement I
	<b>\$398,925</b>	<b>Total</b>
FY 2002	\$220,500	South Fork Walla Walla River Acquisition
	\$165,628	Additional Habitat Acquisitions in Iskuulpa & Buckaroo Watersheds III
	\$95,709	Ringold Springs Hatchery Spring Chinook Production for Reintroduction into the Walla Walla River I
	\$55,348	Continue Native Plant Nursery Operations for Fish Habitat Enhancement II
	\$47,315	Placement of Large Wood for Habitat Enhancement in Upper Umatilla River and its Tributaries
	\$30,000	Walla Walla Instream Passage
	\$9,500	Natural Resource Public Education & Outreach II -Salmon Walk Expedition Events
	\$5,000	Brownell Dam Modification Assessment
	<b>\$629,000</b>	<b>Total</b>
FY 2003	\$276,001	Umatilla Corridors Habitat Acquisitions I
	\$129,190	Ringold Springs Hatchery Spring Chinook Production for Reintroduction into the Walla Walla River II
	\$59,132	Walla Walla Stream Habitat Enhancement I
	\$16,008	Support Staff for PCSRF Project Coordination, Consultation & Outreach III
	\$10,969	Hydrology Assessment for Buckaroo Creek Alluvial Fan
	<b>\$491,300</b>	<b>Total</b>
FY 2004	\$90,000	West Birch Creek Passage Improvement
	\$86,700	Umatilla Corridor Habitat Acquisitions II
	\$80,000	Large Wood Additions to Iskuulpa Watershed
	\$73,935	Support Staff for PCSRF Project Supervision, Coordination & Consultation I
	\$60,000	Continue Native Plant Nursery Operations for Fish Habitat Enhancement III
	\$50,132	Outmigrant Monitoring in the Walla Walla Subbasin I
	\$30,223	Ringold Springs Hatchery Spring Chinook Production for Reintroduction into the Walla Walla River III
	\$20,510	Clear Creek Floodplain Restoration Project I
	\$10,000	Walla Walla Stream Habitat Enhancement II
	<b>\$501,500</b>	<b>Total</b>
FY 2005	\$125,092	Umatilla Corridor Habitat Acquisitions III
	\$60,241	Support Staff for PCSRF Project Supervision, Coordination & Consultation II
	\$50,000	Continue Native Plant Nursery Operations for Fish Habitat Enhancement IV
	\$49,816	Outmigrant Monitoring in the Walla Walla Subbasin II
	\$25,000	Grande Ronde Fish Habitat Enhancement
	\$25,000	North Fork John Day Habitat Enhancement
	\$25,000	Habitat Restoration in the Walla Walla Basin
	\$20,000	Clear Creek Floodplain Restoration Project II
	\$16,500	Natural Resources Public Education & Outreach IV
	\$4,976	North Fork John Day Spawner Surveys
	<b>\$401,625</b>	<b>Total</b>





Nez Perce Tribe

# Coho Salmon Production in the Clearwater River



**Benefits to Salmon/Target Salmon Species Affected:** The goal of the project is to restore coho salmon to sufficient numbers in the Clearwater River Subbasin to support natural production for tribal and non-tribal harvest. Over 2,100 coho adult salmon passed Lower Granite Dam in 2005 on their return to Idaho. The long-term adult return goal for the Clearwater River is 14,000 coho salmon as identified in Wy-Kan-Ush-Mi Wa-Kish-Wit.

	Amount	Project
FY 2000	\$200,000	Coho Salmon Monitoring and Evaluation in the Clearwater River I
	\$150,000	Restore Habitat Access within Lolo Creek Watershed
	\$87,500	Cottonwood Creek Acclimation Facility Modification for Fall Chinook
	<b>\$437,500</b>	<b>Total</b>
FY 2001	\$174,925	Wallowa County Culvert Inventory
	\$140,000	Coho Salmon Production in the Clearwater River I
	\$84,000	Protect Anadromous Fish Habitat within Mill and John's Creeks
	<b>\$398,925</b>	<b>Total</b>
FY 2002	\$283,456	Coho Salmon Production in the Clearwater River II
	\$210,000	Coho Salmon Monitoring and Evaluation in the Clearwater River II
	\$135,544	Little Salmon Falls Adjustment
	<b>\$629,000</b>	<b>Total</b>
FY 2003	\$407,505	Clearwater River Coho Salmon Reintroduction Project I
	\$84,001	Little Salmon River Passage Analysis I
	<b>\$491,506</b>	<b>Total</b>
FY 2004	\$371,500	Clearwater River Coho Salmon Reintroduction Project II
	\$100,000	Little Salmon River Passage Analysis II
	\$30,000	Wallowa County Watershed Restoration
	<b>\$501,500</b>	<b>Total</b>
FY 2005	\$283,759	Coho Salmon Production in the Clearwater River III
	\$117,866	Coho Salmon Monitoring and Evaluation in the Clearwater River II
	<b>\$401,625</b>	<b>Total</b>

## Supplementation

Helicopter outplanting coho salmon parr in the Clearwater Basin.



## Cooperation

(left to right) Silas Whitman; Former Chairman Sam Penney, Nez Perce Tribal Executive Committee; Idaho Governor Dirk Kempthorne; and Aaron Penney work together towards coho restoration.

## Restoration

Spawning coho salmon at Dworshak National Fish Hatchery.



Nez Perce Tribe's fisheries staff have built over four miles of fencing to protect riparian areas within the Mill and John's Creek watersheds.



Columbia River Inter-Tribal Fish Commission

# CRITFC PCSRF Projects

Columbia River Inter-Tribal Fish Commission (CRITFC), on behalf of the four treaty tribes, signed a Memorandum of Understanding (MOU) with the National Marine Fisheries Service (NMFS) in June 2000 on how the Tribes would implement the Pacific Coastal Salmon Recovery Fund (PCSRF) program. Specifically, this MOU addresses how the PCSRF funds awarded to CRITFC will be distributed to eligible tribal salmon recovery activities and projects in the Columbia River Basin.

To meet these MOU objectives, CRITFC employs an internal project review process to assure that projects are consistent with 1) congressional guidance regarding the PCSRF; and 2) the tribes' goals and objectives.

## Education and Outreach



The Columbia River Inter-Tribal Fish Commission and the Native American Youth Association collaborated with The Wetlands Conservancy on a wetland restoration project at the Cedar Mill Wetland (Tualatin River Basin), outside of Portland. The Cedar Mill Wetland is 16 acres and represents a remaining remnant wetland within a rapidly growing landscape. The project controlled invasive plant species and enhanced native vegetation such as Wapato (*Sagittaria latifolia*), pictured left, which is a traditional tribal food plant.



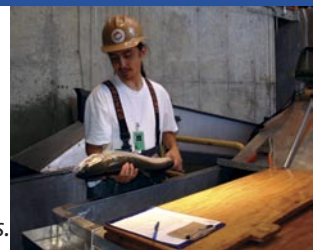
	Amount	Project
FY 2000	\$95,000	Artificial Production Guidelines I
	\$95,000	Risk/Benefit Methodologies
	\$60,000	PCSRF Coordination I
	<b>\$250,000</b>	<b>Total</b>
FY 2001	\$188,045	Continued Research on Artificial Production Genetics and Life History II
	\$68,955	PCSRF Coordination II
	<b>\$257,000</b>	<b>Total</b>
FY 2002	\$149,505	Fall Chinook Stock Composition I
	\$85,172	PCSRF Coordination III
	\$66,127	Coordination of Production Issues and Regional Processes
	\$63,604	Clearing Backlog of Genetic Analyses
	\$60,885	Continued Research on Artificial Production and Genetics and Life History III
	\$18,879	Native American Youth Association Wetland Restoration Project
	<b>\$444,172</b>	<b>Total</b>
FY 2003	\$158,469	PCSRF Coordination IV
	\$116,886	Fall Chinook Stock Composition II
	\$74,620	Artificial Production, Supplementation, Research, Monitoring & Evaluation I
	<b>\$349,975</b>	<b>Total</b>
FY 2004	\$139,994	PCSRF Coordination V
	\$92,240	Fall Chinook Stock Composition III
	\$62,726	Incorporation of Depensaton to Extinction Risk Analysis for the Columbia River Salmonids
	\$59,040	Artificial Production, Supplementation, Research, Monitoring & Evaluation II
	<b>\$354,000</b>	<b>Total</b>
FY 2005	\$115,000	PCSRF Coordination VI
	\$57,960	Fall Chinook Salmon Stock Composition & GIS IV
	\$55,745	Artificial Production, Supplementation, Research, Monitoring & Evaluation III
	\$54,795	Watershed Habitat and Extinction Risks to Columbia River Chinook Salmon and Steelhead
	<b>\$283,500</b>	<b>Total</b>

Columbia River Inter-Tribal Fish Commission has received a total of \$13,375,400 under the PCSRF for Fiscal Years 2000-2005. The CRITFC tribes have implemented 150 PCSRF projects. Of the 150 projects, 106 have been completed (71%). Below is a summary of all the projects by project category:

Category	# of Projects	Funding
Salmon Habitat Restoration	66	\$5,385,537
Salmon Enhancement	23	\$3,083,427
Research Monitoring & Evaluation	37	\$3,439,812
Watershed Subbasin Planning & Assessment	5	\$499,470
Public Education & Outreach	6	\$96,812
Program Administration	13	\$870,342
<b>Total</b>	<b>150</b>	<b>\$13,375,400</b>

## Salmon Research

Solomon Trimble, Summer intern with CRITFC, gained first-hand experience in assessing indicator stocks within the Columbia River basin and in improving methods for providing population estimates, escapement monitoring, and establishing spawner-recruit relationships.







Confederated Tribes and Bands of the Yakama Nation

# Hanson Ponds Floodplain Restoration on the Yakima River

**Benefits to Salmon/Target Salmon Species Affected:** The Yakama Nation, the City of Cle Elum, Washington Departments of Transportation, Natural Resources, Fish and Wildlife, and Ecology collaborated on the Hanson Ponds Floodplain Restoration project. The project provides critical juvenile rearing habitat for spring Chinook, coho, summer steelhead and resident trout (including bull trout). The project connects the Yakima River to Hanson Ponds by obliterating a 4,500 foot armored levee. This allows a controlled portion of the flow to run through the Hanson Ponds, which are shallow, floodplain gravel pits. The upper pond is 13 acres and the lower pond is 25 acres. Twenty percent of the base flow is routed through the ponds, and out the lower end, into a sinuous 2,000 foot created channel (mostly through natural stream channel hydraulics).



	Amount	Project
FY 2000	\$240,000	Swale Creek Acclimation Site Development
	\$83,164	Ahtanum Creek Fencing and Riparian Revegetation
	\$54,477	Castile Falls Fish Passage Improvement
	\$50,000	Washougal Coho Production (Mitchell Act Facility)
	\$9,859	Klickitat Rearing Troughs
	<b>\$437,500</b>	<b>Total</b>
FY 2001	\$273,682	Hanson Ponds Floodplain Restoration on the Yakima River I
	\$53,243	Starvation Flats Floodplain Restoration Project
	\$42,983	Evaluation of Supplementation Programs: Sampling Columbia River Treaty Fisheries for Tag Recovery
	\$29,017	Wenatchee Basin Riparian Enhancement and Coho Reintroduction I
	<b>\$398,925</b>	<b>Total</b>
FY 2002	\$284,984	Wenatchee Basin Riparian Enhancement and Coho Reintroduction II
	\$75,796	Hanson Ponds Floodplain Restoration on the Yakima River II
	\$56,700	Prosser Heavy Equipment
	\$43,992	Water Quality Monitoring in Water Resource Inventory Areas 29, 30 & 31
	\$43,290	Yakima Basin Riparian and Floodplain Restoration
	\$42,515	Holmes Property Acquisition I
	\$39,962	Klickitat Hatchery Fish Culturist
	\$33,426	Public Information Specialist for Yakama Nation Salmon Recovery Efforts
	\$8,335	Rock Creek Assessment and Project Development
	<b>\$629,000</b>	<b>Total</b>
FY 2003	\$195,022	Construction of Castile Falls 4/5 In-Channel Sills
	\$124,922	Hancock Springs Restoration I
	\$50,686	PCSRF Administrative Assistance & Yakama Nation Staff Coordination
	\$55,390	LaSalle Coho Hatchery and Education Facility
	\$29,539	Employment of Gaging Stations on Ahtanum Creek
	\$13,244	White Creek Road Rehabilitation-Phase I
	\$11,610	Central and Eastern Klickitat No-Till Drill Acquisition
	\$8,000	Phase II Equipment Acquisition (Trailer)
	\$2,887	Evaluation of Spawner Effectiveness of Hatchery & Natural Spring Chinook
	<b>\$491,300</b>	<b>Total</b>
FY 2004	\$250,500	Holmes Property Acquisition II
	\$71,014	Upper Columbia Project Development Coordinator
	\$39,000	Phase III Equipment Acquisition (Dump Truck)
	\$36,772	Habitat Project Information Development
	\$34,894	Pine Creek Engineering
	\$25,970	Ahtanum Creek Stock Water Pump
	\$24,610	Klickitat Hatchery Fish Pump
	\$9,986	Hancock Springs Technician 3
	\$8,754	Administrative Assistance & Participation
	<b>\$501,500</b>	<b>Total</b>
FY 2005	\$143,300	Upper Klickitat River In-Channel and Floodplain Enhancement
	\$129,000	Nason Creek Wetlands Acquisition
	\$117,912	Hancock Springs Restoration Project II
	\$11,413	Phase IV Equipment Acquisition
	<b>\$401,625</b>	<b>Total</b>

## Habitat Protection

Fish passage improvements opened up a mile of stream to migrating fish.



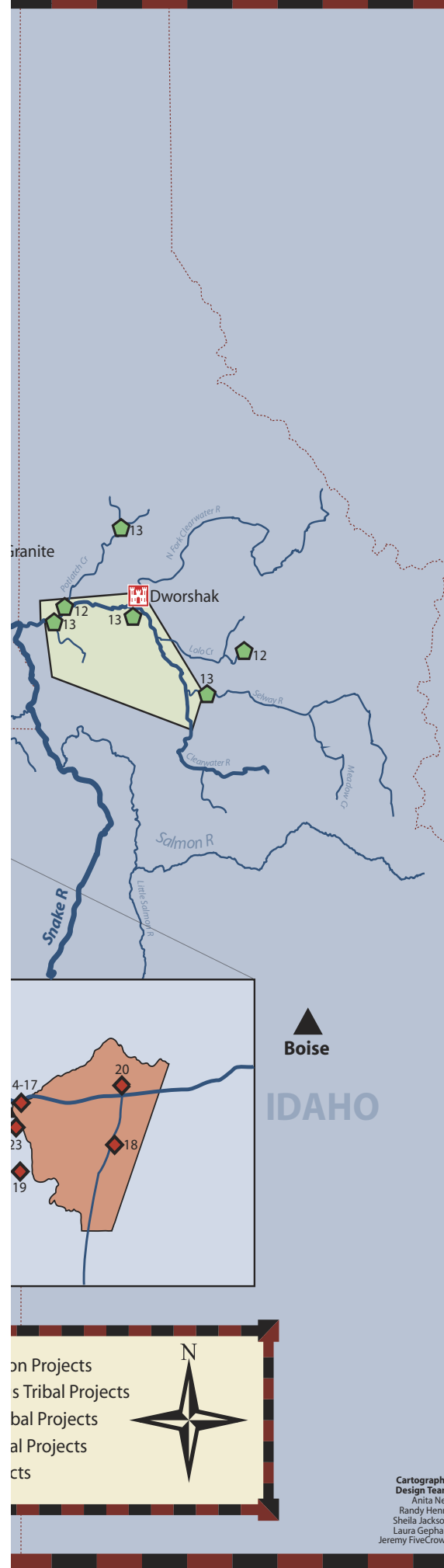
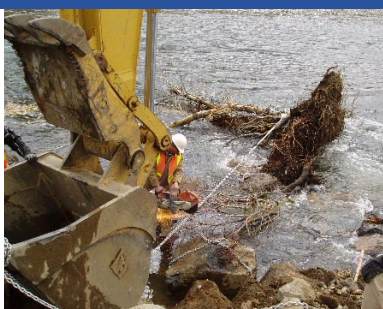
## Upland Habitat



Trees planted on a decommissioned access road help to restore the riparian area.

## Instream Habitat

Removal of a fish passage blockage and large wood debris adds to habitat complexity for chinook, coho and steelhead.



## ONGOING PROJECTS

by the  
Columbia River Inter-Tribal Fish Commission under the  
Pacific Coastal Salmon Recovery Fund  
FYs 2004-2005

- ▲ Warm Springs Tribal Projects**
  - 1 A Mark-Recapture Experiment to Improve the Escapement Estimate of Deschutes Fall Chinook II
  - 2 Warm Springs Reservation Watershed Project Maintenance IV
  - 3 Warm Springs Reservation Watershed Project Maintenance V
  - 4 Fish Production Assessment on the Warm Springs Reservation IV
  - 5 Fish Production Assessment on the Warm Springs Reservation V
  - 6 Deschutes River Fall Chinook Salmon Coded Wire Tagging Project II
  - 7 Dead Cow Creek Fish Passage and Habitat Improvement Project
  - 8 West Fork Hood River Wood Placement Project
  - 9 Staff Support for PCSRF Project Coordination & Implementation
  - 10 Ecological Interactions Assessment
  - 11 Columbia River Spring Chinook Stock Evaluation Project
- ◆ Umatilla Tribal Projects**
  - 21 Ringold Springs Hatchery Spring Chinook Production for Reintroduction into the Walla Walla River III
  - 22 Habitat Restoration in the Walla Walla Basin
  - 23 Staff Support for PCSRF Supervision, Coordination & Consultation II
  - 24 Walla Walla Habitat Enhancement II
  - 25 Outmigrant monitoring in the Walla Walla Subbasin II
  - 26 Clear Creek Floodplain Restoration I
  - 27 Clear Creek Floodplain Restoration II
  - 28 Grand Ronde Fish Habitat Enhancement
  - 29 North Fork John Day Spawner Surveys
  - 30 North Fork John Day Habitat Enhancement
- Yakama Nation Tribal Projects**
  - 31 Ahtanum Creek Stock Water Pump
  - 32 Upper Columbia River Project Development Coordinator
  - 33 Administration Assistance and Participation
  - 34 Habitat Project Information Development
  - 35 Phase IV Equipment Acquisition
  - 36 Pine Creek Engineering
  - 37 Hancock Springs Restoration Project II
  - 38 Hancock Springs Technician 3
  - 39 Upper Klickitat River In-Channel and Floodplain Enhancement
- ◻ CRITFC Projects**
  - 40 PCSRF Coordination V
  - 41 PCSRF Coordination VI
  - 42 Fall Chinook Stock Composition & GIS IV
  - 43 Artificial Production, Supplementation Research, Monitoring & Evaluation III
  - 44 Watershed Habitat and Extinction Risks to Columbia River Chinook Salmon and Steelhead
- ◻ Nez Perce Tribal Projects**
  - 12 Coho Salmon Monitoring and Evaluation in the Clearwater River III
  - 13 Coho Salmon Production in the Clearwater River III
- ◆ Umatilla Tribal Projects**
  - 14 Continue Native Plant Nursery Operations for Fish Habitat Enhancement III
  - 15 Continue Native Plant Nursery Operations for Fish Habitat Enhancement IV
  - 16 Staff Support for PCSRF Project Supervision, Coordination & Consultation I
  - 17 Natural Resources Public Education & Outreach IV
  - 18 Large Wood Additions to Iskuulpa Watershed
  - 19 West Birch Creek Passage Improvement
  - 20 Umatilla Corridors Habitat Acquisition III





Confederated Tribes of the Warm Springs Reservation of Oregon



# Fish Production Assessment on the Warm Springs Reservation

**Benefits to Salmon/Target Salmon Species Affected:** An assessment of current and potential fish production levels is needed to achieve the Warm Springs' goal of self-sustaining, harvestable wild anadromous fish populations. Since Fiscal Year 2000 the Warm Springs fisheries staff have outplanted 1,055 adult chinook salmon into Shitike Creek.

## Research



Warm Springs fisheries staff performing juvenile out-migrant trapping on Shitike Creek.

## Monitoring

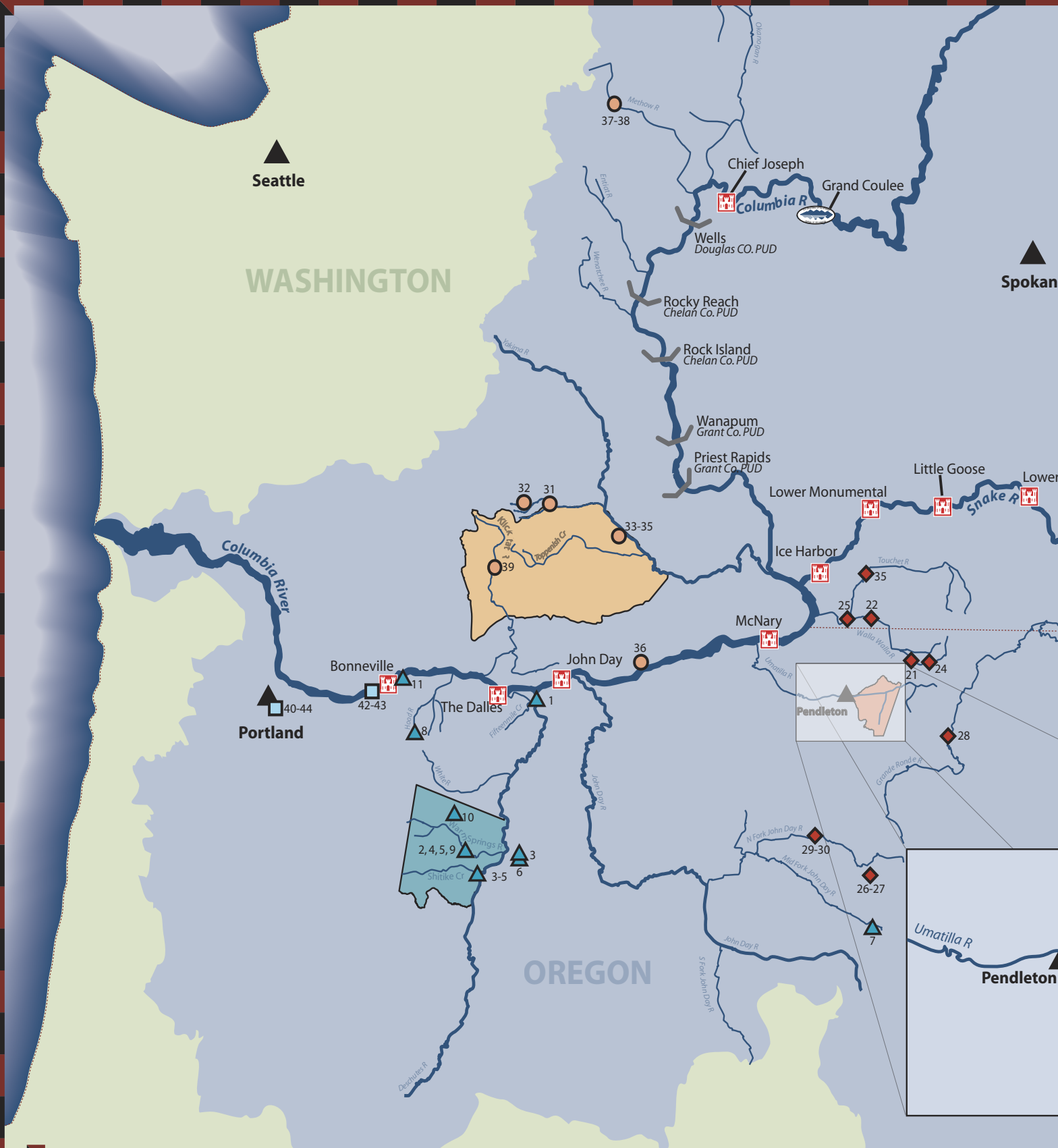
Warm Springs fisheries staff performing index snorkel counts on Shitike Creek. This is one method of monitoring and evaluating the project's success, a requirement under the PCSRF.



The Warm Springs Tribe has installed over twenty miles of riparian enclosure fencing to prevent livestock from disturbing sensitive stream bank areas.



	Amount	Project
FY 2000	\$225,782	Fish Production Assessment on the Warm Springs Reservation I
	\$111,805	Improve Methodology for Estimating Fall Chinook Populations
	\$61,086	On-Reservation Habitat Restoration (Shade Covers for Warm Springs National Fish Hatchery Raceways)
	\$38,827	John Day Watershed Restoration Program
	<b>\$437,500</b>	<b>Total</b>
FY 2001	\$187,579	Development and Implementation of Warm Springs Salmon Production Projects
	\$57,892	Warm Springs Reservation Watershed Project Maintenance I
	\$50,000	John Forrest Ranch Lease
	\$40,000	Farmers Irrigation District Screen Replacement
	\$32,283	Aerial Thermal Infrared and Color Videography of Anadromous Streams
	\$31,171	East Fork Irrigation District Central Lateral Canal I
	<b>\$398,925</b>	<b>Total</b>
FY 2002	\$247,577	Fish Production Assessment on the Warm Springs Reservation II
	\$153,884	Deschutes River Fall Chinook Salmon Coded Wire Tagging Project I
	\$122,329	Warm Springs Aquatic Habitat Restoration and Public Awareness Project
	\$83,827	East Fork Irrigation District Central Lateral Canal II
	\$19,138	Warm Springs Reservation Watershed Project Maintenance II
	\$2,073	Fifteenmile Creek Weed Treatment and Tree Planting Project
	<b>\$628,828</b>	<b>Total</b>
FY 2003	\$212,507	Fish Production Assessment on the Warm Springs Reservation III
	\$130,093	A Mark-Recapture Experiment to Improve the Escapement Estimate of the Deschutes Fall Chinook I
	\$50,766	W231A Road Rocking (Warm Springs River Watershed Restoration)
	\$43,863	Warm Springs Reservation Watershed Project Maintenance III
	\$40,000	Badger Creek Watershed Restoration
	\$10,691	W245 Road Rocking (Warm Springs River Watershed Restoration)
	<b>\$487,920</b>	<b>Total</b>
FY 2004	\$170,162	Fish Production Assessment on the Warm Springs Reservation IV
	\$141,975	A Mark-Recapture Experiment to Improve the Escapement Estimate of the Deschutes Fall Chinook
	\$72,998	Warm Springs Reservation Watershed Project Maintenance IV
	\$70,000	West Fork Hood River Wood Placement Project
	\$46,365	Staff Support for PCSRF Project Coordination & Implementation
	<b>\$501,500</b>	<b>Total</b>
FY 2005	\$153,986	Fish Production Assessment on the Warm Springs Reservation V
	\$140,072	Deschutes River Fall Chinook Salmon Coded Wire Tagging Project II
	\$43,211	Columbia River Spring Chinook Stock Evaluation Project
	\$41,953	Warm Springs Reservation Watershed Project Maintenance V
	\$13,304	Ecological Interactions Assessment
	\$9,099	Dead Cow Creek Fish Passage and Habitat Improvement Project
	<b>\$401,625</b>	<b>Total</b>

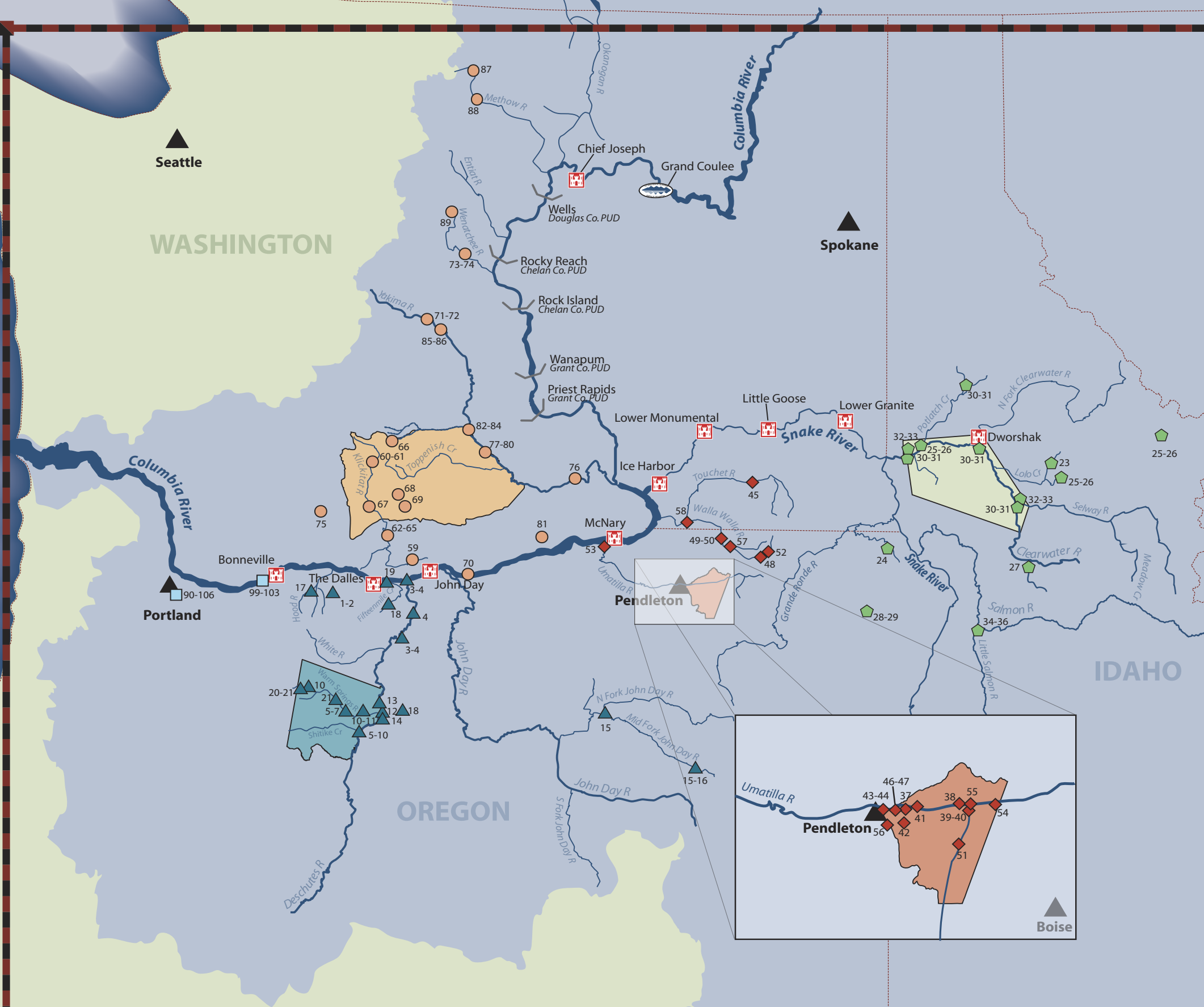


### Columbia River Inter-Tribal Fish Commission

- US Army Corps of Engineers Dams
- US Bureau of Reclamation Dams
- Other Major Dams
- Major Rivers and Tributaries
- State Boundaries
- Yakama Reservation
- Warm Springs Reservation
- Nez Perce Reservation
- Umatilla Reservation
- Columbia River Basin Boundary
- Warm Spring
- Nez Perce Trib
- Umatilla Trib
- CRITFC Project

# COMPLETED PROJECTS

by the  
**Columbia River Inter-Tribal Fish Commission under the  
 Pacific Coastal Salmon Recovery Fund**  
 FYs 2000-2005



- ▲ Warm Springs Tribal Projects**
  - 1 East Fork Irrigation District Central Lateral Canal I
  - 2 East Fork Irrigation District Central Lateral Canal II
  - 3 Improve Methodology for Estimating Fall Chinook Populations
  - 4 A Mark-Recapture Experiment to Improve the Escapement Estimate of the Fall Chinook Salmon in the Deschutes River I
  - 5 Fish Production Assessment - Warm Springs Reservation I
  - 6 Fish Production Assessment - Warm Springs Reservation II
  - 7 Fish Production Assessment - Warm Springs Reservation III
  - 8 Development and Implementation of Warm Springs Salmon Production Projects
  - 9 Warm Springs Aquatic Habitat Restoration and Public Awareness Project
  - 10 Aerial Thermal Infrared and Color Videography of Anadromous Streams
  - 11 On-Reservation Habitat Restoration (Shade covers for Warm Springs National Fish Hatchery Raceways)
  - 12 Warm Springs Reservation Watershed Project Maintenance I
  - 13 Warm Springs Reservation Watershed Project Maintenance II
  - 14 Warm Springs Reservation Watershed Project Maintenance III
  - 15 John Day Watershed Restoration Program
  - 16 John Forrest Ranch Lease
  - 17 Farmers Irrigation District Screen Replacement
  - 18 Deschutes River Fall Chinook Coded Wire Tagging Project I
  - 19 Fifteenmile Creek Weed Treatment and Tree Planting Project
  - 20 Road Rocking W231A (Warm Springs River Watershed Restoration)
  - 21 Road Rocking W245 (Warm Springs River Watershed Restoration)
  - 22 Badger Creek Watershed Restoration
- ◆ Umatilla Tribal Projects**
  - 49 Ringold Springs Hatchery Spring Chinook Production for Reintroduction into the Walla Walla River I
  - 50 Ringold Springs Hatchery Spring Chinook Production for Reintroduction into the Walla Walla River II
  - 51 Placement of Large Wood for Habitat Enhancement in Upper Umatilla River and its Tributaries
  - 52 Walla Walla Instream Passage
  - 53 Brownell Dam Modification Assessment
  - 54 Umatilla Corridors Habitat Acquisition I
  - 55 Umatilla Corridors Habitat Acquisition II
  - 56 Support Staff for PCSRF Project Coordination, Consultation & Outreach III
  - 57 Walla Walla Habitat Enhancement I
  - 58 Outmigrant Monitoring in the Walla Walla Subbasin I
- Yakama Nation Tribal Projects**
  - 59 Swale Creek Acclimation Site Development
  - 60 Castile Falls Passage Improvements
  - 61 Construction of Castile Falls 4/5 In-Channel Sills
  - 62 Klickitat Rearing Troughs
  - 63 Klickitat Hatchery Fish Culturist
  - 64 Central & Eastern Klickitat No-Till Drill Acquisition
  - 65 Klickitat Hatchery Fish Pump
  - 66 Ahtanum Creek Fencing and Riparian Revegetation
  - 67 Washougal Coho Production (Mitchell Act Facility)
  - 68 Starvation Flats Floodplain Restoration Project
  - 69 White Creek Road Rehabilitation-Phase I
  - 70 Evaluation of Supplementation Programs: Sampling Columbia River Treaty Fisheries for Tag Recovery
  - 71 Hanson Ponds Floodplain Restoration on the Yakima River I
  - 72 Hanson Ponds Floodplain Restoration on the Yakima River II
  - 73 Wenatchee Basin Riparian Enhancements and Coho Reintroduction I
  - 74 Wenatchee Basin Riparian Enhancements and Coho Reintroduction II
  - 75 Water Quality Monitoring in Water Resource Inventory Areas 29, 30 and 31
  - 76 Prosser Heavy Equipment
  - 77 Phase II Equipment Acquisition (Trailer)
  - 78 Phase III Equipment Acquisition (Dump Truck)
  - 79 Public Information Specialist for Yakama Nation Salmon Recovery Efforts
  - 80 PCSRF Administrative Assistance and Yakama Nation Staff Coordination
  - 81 Rock Creek Assessment and Project Development
  - 82 Yakima Basin Riparian and Floodplain Restoration
  - 83 LaSalle Coho Hatchery and Education Facility
  - 84 Employment of Gaging Stations on Ahtanum Creek
  - 85 Holmes Property Acquisition I
  - 86 Holmes Property Acquisition II
  - 87 Evaluation of Spawner Effectiveness of Hatchery & Natural Spring Chinook
  - 88 Hancock Springs Restoration I
  - 89 Nason Creek Wetland Acquisition
- ▲ Nez Perce Tribal Projects**
  - 23 Restore Habitat Access within Lolo Creek Watershed
  - 24 Cottonwood Creek Acclimation Facility Modifications for Fall Chinook
  - 25 Coho Salmon Monitoring and Evaluation in the Clearwater River I
  - 26 Coho Salmon Monitoring and Evaluation in the Clearwater River II
  - 27 Protect Anadromous Fish Habitat within Mill and John's Creeks
  - 28 Wallowa County Culvert Inventory
  - 29 Wallowa County Watershed Restoration
  - 30 Coho Salmon Production in the Clearwater River I
  - 31 Coho Salmon Production in the Clearwater River II
  - 32 Clearwater River Coho Salmon Reintroduction Project I
  - 33 Clearwater River Coho Salmon Reintroduction Project II
  - 34 Little Salmon Falls Adjustment
  - 35 Little Salmon River Passage Analysis I
  - 36 Little Salmon River Passage Analysis II
- Umatilla Tribal Projects**
  - 37 Iskuulpa Creek and Minthorn Springs Acquisition I
  - 38 Habitat Acquisition in Iskuulpa and Buckaroo Creek Watersheds II
  - 39 Additional Habitat Acquisitions in Iskuulpa and Buckaroo Watersheds III
  - 40 Hydrology Assessment for Buckaroo Creek Alluvial Fan
  - 41 Mission Creek Fish Passage Improvement
  - 42 Fish Transportation Vehicle
  - 43 Natural Resource Public Education & Outreach I-Salmon Walk
  - 44 Natural Resource Public Education & Outreach II-Salmon Walk & Expedition Events
  - 45 Whiskey Creek Fish Passage Improvement Project
  - 46 Assistance to Native Plant Nursery for Fish Habitat Enhancement I
  - 47 Continued Native Plant Nursery Operations for Fish Habitat Enhancement II
  - 48 South Fork Walla Walla River Acquisition
- CRITFC Projects**
  - 90 Artificial Production Guidelines I
  - 91 Continued Research on Artificial Production and Genetics II
  - 92 Continued Research on Artificial Production and Genetics III
  - 93 Risk/Benefit Methodologies
  - 94-97 PCSRF Coordination I-IV
  - 98 Coordination of Production Issues and Regional Processes
  - 99-101 Fall Chinook Stock Composition I-III
  - 102 Artificial Production, Supplementation, Research, Monitoring & Evaluation I
  - 103 Artificial Production, Supplementation, Research, Monitoring & Evaluation II
  - 104 Native American Youth Association Wetland Restoration Project
  - 105 Clearing Backlog of Genetic Analyses
  - 106 Incorporation of Dispensation to Extinction Risk Analysis for the Columbia River Salmonids



**Columbia River  
 Inter-Tribal Fish  
 Commission**

- US Army Corps of Engineers Dams
- US Bureau of Reclamation Dams
- Other Major Dams
- Major Rivers and Tributaries
- State Boundaries
- Yakama Reservation
- Warm Springs Reservation
- Nez Perce Reservation
- Umatilla Reservation
- Columbia River Basin Boundaries
- Yakama Nation Projects
- Warm Springs Tribal Projects
- Nez Perce Tribal Projects
- Umatilla Tribal Projects
- CRITFC Projects



Cartography  
 Design Team  
 Anita Nez  
 Randy Henry  
 Sheila Jackson  
 Laura Gephart  
 Jeremy FiveCrows